



# 2026

## North America

**USA**  
Intex Recreation Corp.  
P.O. Box 1440,  
Long Beach, CA 90801-1440,  
USA  
T: (310) 549-5400  
W: [www.intexcorp.com](http://www.intexcorp.com)

## Asia

**INTERNATIONAL**  
Intex Development Co., Ltd.  
9th Floor, Everbright Centre,  
108 Gloucester Road, Wanchai,  
Hong Kong  
T: (852) 2827-0000  
E: [info@intexdevelopment.com](mailto:info@intexdevelopment.com)  
W: [www.intexdevelopment.com](http://www.intexdevelopment.com)

## Europe

**FRANCE**  
Unitex Service (France) S.A.S.  
Z.A. de Milleure Bois du Ban – N°4  
71480 LE MIROIR,  
France  
T: (33) 385 75 64 64  
E: [info@intexcorp.com.fr](mailto:info@intexcorp.com.fr)  
W: [www.intex.fr](http://www.intex.fr)

**ITALY**  
Unitex Italia S.R.L.  
Via Brescia 1,  
25014 Castenedolo – Brescia  
Italy  
T: (39) 039 2296998  
E: [commerciale@intexcorp.it](mailto:commerciale@intexcorp.it)  
W: [www.intexitalia.com](http://www.intexitalia.com)

**NETHERLANDS**  
Intex Trading B.V.  
Ettenseweg 46,  
4706 PB Roosendaal,  
The Netherlands  
T: (31) 165-593939  
E: [info@intexcorp.nl](mailto:info@intexcorp.nl)  
W: [www.intex.eu](http://www.intex.eu)

**EASTERN EUROPE**  
Intex Trading s.r.o.  
Hradecka 3  
130 00 Praha 3  
Czech Republic  
T: (420) 267 312 645  
E: [info@intexcorp.cz](mailto:info@intexcorp.cz)  
W: [www.intexcompany.cz](http://www.intexcompany.cz)

**PureSpa™**  
THE ULTIMATE SPA EXPERIENCE

©2025 Intex Marketing Ltd. - Intex Development Co., Ltd. -  
Intex Recreation Corp. All rights reserved. Printed in China.  
©™ Trademarks used in some countries of the world under  
license from Intex Marketing Ltd. to Intex Development Co., Ltd.  
and Intex Recreation Corp.

# INTEX®



**PureSpa™**  
THE ULTIMATE SPA EXPERIENCE

# 2026



# Fiber-Tech™

## TECHNOLOGY

### DESIGNED FOR COMFORT. ENGINEERED FOR DURABILITY.

Innovative Fiber-Tech™ Technology offers superior structural stability while maintaining a comfortable surface for a luxurious and refreshing spa experience.



## PureSpa™

### ADVANTAGES

#### Durable Fiber-Tech™ Technology



#### Built-In Hard Water Treatment System

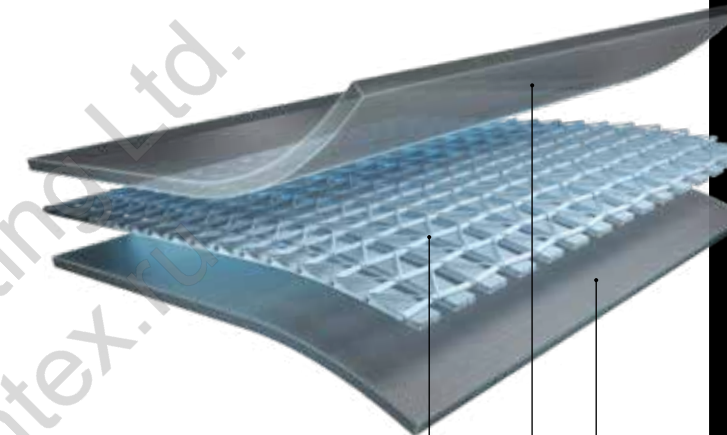


#### Heated Air Bubbles



#### Durable Exterior

Puncture-resistant 3-ply laminated material



U.S. Patent No. 8,562,773

**Top & Bottom Layer:**  
Embossed heavy-gauge PVC

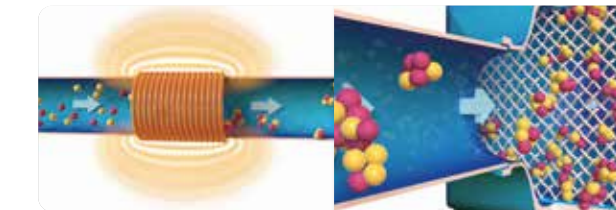


Fiber-Tech™ Technology provides the ultimate comfort and support.

**Middle Layer:**  
Super-strength reinforced polyester mesh

#### Hard Water Treatment System

The built-in hard water treatment system makes water gentler on skin, clothes and the entire spa system.



The system generates an electromagnetic field that agitates calcium and other minerals in the water, causing them to create suspended crystals.

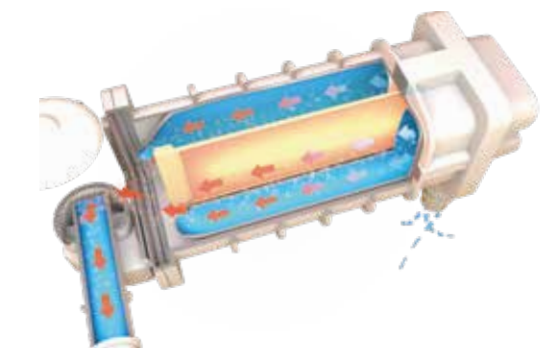
The suspended crystals of hard water elements are retained in the filter cartridge, leaving soft water in the spa.



Hard water buildup limits water flow and reduces the life of your spa.



#### Powerful & Safe Heating System



The Positive Temperature Coefficient (PTC) heater is designed to maximize heat transfer to the water, while ensuring the highest level of safety, performance and longevity.



# Discover Pure Relaxation



Every PureSpa™ has been designed to bring an affordable and convenient spa experience to your home. The PREMIUM FEATURES of every PureSpa™ come with comfort in mind and control at your fingertips.

## For Family & Friends



Available in 4- and 6-person sizes

## Simple Control



Intuitive touch control

## Portable



Grab-handles for ease of transport

## Safety



Locking buckles on spa cover to prevent unauthorized access

## Minimal Heat Loss



Spa cover to minimize heat loss

## Storage



Carry bag for easy storage and transport

## Protection



Ground cloth to protect bottom surface and mitigate heat loss

## Maintenance



Floating chemical dispenser (except for models equipped with a saltwater system)

## Convenience



Two replaceable filter cartridges





## PureSpa™ Bubble Massage

The PureSpa™ Bubble Massage is the perfect way to unwind after a long day. Up to 140 heated bubbles deliver the kind of soothing warmth that comes with heat and effervescence working together. You can relax for years to come with the structural strength of Intex's patented Fiber-Tech™ technology.



Patented Fiber-Tech™  
Technology



Heated Air Bubbles



# PureSpa™ Bubble Massage

PureSpa™ provides relaxation at the touch of a button. The easy-to-use control panel activates high performance bubble jets surrounding the interior of the spa for a refreshing massage.



Available in 4- and 6-person sizes

Inner size	4-person		6-person
	Outer size		
	57" (1.45m)		65" (1.65m)
	77" (1.96m)		85" (2.16m)

OLIVE GREEN  
ROUND

Available in 4- and 6-person sizes

3-Ply  
Laminated PVC



Flow Rate:  
460 gal/hr /  
1,741 L/hr

Temp. Range:  
50° ~ 104°F /  
10° ~ 40°C

Hard Water System:  
10W

Standard 12 Languages (110-120V)	28425NP	4	210 gal / 795L	43.9 kg	800W/ 110-120V	1,300W/ 110-120V	1° ~ 1.5°C/hr	120
	28427NP	6	290 gal / 1,098L	47.5 kg	800W/ 110-120V	1,300W/ 110-120V	0.5° ~ 1°C/hr	140
EP English (110-120V)	28425EH*	4	210 gal / 795L	115.5 lb	1.1 hp/ 110-120V	1,300W/ 110-120V	2° ~ 3°F/hr	120
	28427EH*	6	290 gal / 1,098L	126.5 lb	1.1 hp/ 110-120V	1,300W/ 110-120V	1.1° ~ 2°F/hr	140
Standard 12 Languages (220-240V)	28426NP	4	210 gal / 795L	46.3 kg	800W/ 220-240V	2,200W/ 220-240V	1.5° ~ 2.5°C/hr	120
	28428NP	6	290 gal / 1,098L	50.0 kg	800W/ 220-240V	2,200W/ 220-240V	1° ~ 2°C/hr	140

US Patent No.8,562,773 | No.9,254,240 | No.9,468,582 | No.9,567,762 | No.9,642,771

• With energy-efficient spa cover



Spa Height:  
28" / 71cm



• New, larger Type S2 cartridge with 65% more filtration surface than previous Type S1

• Integrated control box design for easy access and hassle-free cartridge replacement



Titanium cell saltwater conversion kit (sold separately)



Up to 140 soothing bubble jets



Push-button control panel





## PureSpa™ Greywood Deluxe

The Greywood Deluxe delivers ultimate backyard relaxation and rejuvenation. Up to 170 soothing bubble jets combine with deluxe features such as a wireless control panel, premium headrests, and LED lighting for an elevated spa experience.



**Patented Fiber-Tech™  
Technology**



**Heated Air Bubbles**



# PureSpa™

## Greywood Deluxe

Fiber-Tech™ interior construction offers superior structural stability while maintaining a comfortable surface for a luxurious and refreshing spa experience. Up to 170 high-powered bubble jets guarantee a soothing and relaxing massage at the touch of a button.



Available in 4- and 6-person sizes

	4-person		6-person
Inner size	57" (1.45m)		65" (1.65m)
Outer size	77" (1.96m)		85" (2.16m)

WOODGRAIN  
ROUND

Available in 4- and 6-person sizes

3-Ply  
Laminated PVC



Flow Rate:  
460 gal/hr /  
1,741 L/hr

Temp. Range:  
50° ~ 104°F /  
10° ~ 40°C

Hard Water System:  
10W

		 Seating Capacity	 Water Capacity	 Shipping Weight	 Bubble Air Blower	 Heater	 Temp. Rise	 Bubble Jets
Standard 12 Languages (110-120V)	28439NP 	4	210 gal / 795L	43.9 kg	800W/ 110-120V	1,300W/ 110-120V	1° ~ 1.5°C/hr	140
	28441NP 	6	290 gal / 1,098L	47.8 kg			0.5° ~ 1°C/hr	170
EP English (110-120V)	28439EH*	4	210 gal / 795L	115.7 lb	1.1 hp/ 110-120V	1,300W/ 110-120V	2° ~ 3°F/hr	140
	28441EH*	6	290 gal / 1,098L	126.7 lb			1.1° ~ 2°F/hr	170
Standard 12 Languages (220-240V)	28440NP 	4	210 gal / 795L	46.7 kg	800W/ 220-240V	2,200W/ 220-240V	1.5° ~ 2.5°C/hr	140
	28442NP 	6	290 gal / 1,098L	50.9 kg			1° ~ 2°C/hr	170

US Patent No.8,562,773 | No.9,254,240 | No.9,468,582 | No.9,567,762 | No.9,642,771

• With energy-efficient spa cover



Spa Height:  
28" / 71cm



• New, larger Type S2 cartridge with 65% more filtration surface than previous Type S1

• Integrated control box design for easy access and hassle-free cartridge replacement



Intex Link™ App

- Control all spa functions from your phone
- Program spa use and maintenance remotely with Wi-Fi connectivity



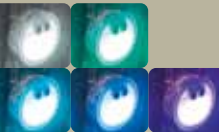
- Removable wireless control panel
- Integrated wireless charging
- 48 hours of operation on a single charge
- Conveniently attaches to top of the tub



Includes two premium PU foam headrests



Includes one multicolored LED light





# PureSpa™ Chevron Deluxe

The PureSpa™ Chevron Deluxe is the perfect way to unwind after a long day. Up to 170 heated bubbles deliver soothing warmth, while the structural strength of our patented Fiber-Tech construction ensures years of relaxation.



Patented Fiber-Tech™  
Technology



Heated Air Bubbles





# PureSpa™ Chevron Deluxe

Enhance any backyard or outdoor space with style. The Chevron Deluxe boasts a familiar, elegant design and features a powerful bubble jet system. The result? Hours of refreshing and revitalizing spa time amidst beauty.

Available in 4- and 6-person sizes

	<b>4-person</b>		<b>6-person</b>
<b>Inner size</b>	49" (1.24m)		57" (1.45m)
<b>Outer size</b>	69" (1.75m)		77" (1.96m)

## CHEVRON SQUARE

Available in 4- and 6-person sizes

## 3-Ply Laminated PVC



Flow Rate:  
460 gal/hr /  
1,741 L/hr

Temp. Range:  
50° ~ 104°F /  
10° ~ 40°C

Hard Water System:  
10W

Salt Water System:  
20W

Seating Capacity

Water Capacity

Shipping Weight

Bubble Air Blower

Heater

Temp. Rise

Bubble Jets

Standard 12 Languages (110-120V)	28445NP	4	210 gal / 795L	45.4 kg	800W/ 110-120V	1,300W/ 110-120V	1° ~ 1.5°C/hr	140
	28471NP	6	290 gal / 1,098L	49.9 kg			0.5° ~ 1°C/hr	170
EP English (110-120V)	28445EH* <span>NEW</span>	4	210 gal / 795L	118.1 lb	1.1 hp/ 110-120V	1,300W/ 110-120V	2° ~ 3°F/hr	140
	28471EH* <span>NEW</span>	6	290 gal / 1,098L	130.7 lb			1.1° ~ 2°F/hr	170
Standard 12 Languages (220-240V)	28446NP	4	210 gal / 795L	48.3 kg	800W/ 220-240V	2,200W/ 220-240V	1.5° ~ 2.5°C/hr	140
	28472NP	6	290 gal / 1,098L	52.9 kg			1° ~ 2°C/hr	170

US Patent No.8,562,773 | No.9,254,240 | No.9,468,582 | No.9,567,762 | No.9,642,771

• With energy-efficient spa cover



Spa Height:  
28" / 71cm

## New and Improved Filtration



Plug In

- New, larger Type S2 cartridge with 65% more filtration surface than previous Type S1

- Integrated control box design for easy access and hassle-free cartridge replacement

## Intex Link™ App

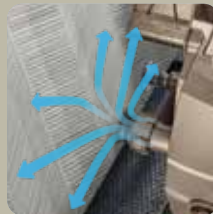
- Control all spa functions from your phone
- Program spa use and maintenance remotely with Wi-Fi connectivity

Download on the App Store

GET IT ON Google Play



- Removable wireless control panel
- Integrated wireless charging
- 48 hours of operation on a single charge
- Conveniently attaches to top of the tub



Built-in FastFill™ inflation system



Chevron pattern





## PureSpa™ Greystone Deluxe

The Greystone Deluxe transforms a backyard into a luxurious oasis. Setup is a breeze, thanks to the integrated QuickFill inflation system. Meanwhile, the saltwater system ensures easy water maintenance. Customers will relax into the 170 powerful bubble jets, resting snugly on the included premium headrests. Color-changing LED lights set the mood for nighttime soaks.



**Patented Fiber-Tech™  
Technology**



**Heated Air Bubbles**



# PureSpa™

## Greystone Deluxe

This spa is the perfect addition to any backyard or outdoor space. Fiber-Tech™ interior construction provides lasting durability. Featuring a powerful bubble jet system, the Greystone Deluxe delivers a soothing and invigorating massage that will leave your customers feeling refreshed and revitalized.



Available in 4- and 6-person sizes

	4-person		6-person
Inner size	49" (1.24m)		57" (1.45m)
Outer size	69" (1.75m)		77" (1.96m)

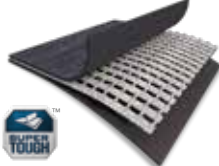


Spa Height:  
28" / 71cm

### GREYSTONE SQUARE

Available in 4- and 6-person sizes

### 3-Ply Laminated PVC



Flow Rate:  
460 gal/hr /  
1,741 L/hr

Temp. Range:  
50° ~ 104°F /  
10° ~ 40°C

Hard Water System:  
10W

Salt Water System:  
20W

Seating Capacity

Water Capacity

Shipping Weight

Bubble Air Blower

Heater

Temp. Rise

Bubble Jets

Standard 12 Languages (110-120V)	28449NP	4	210 gal / 795L	46.1 kg	800W/ 110-120V	1,300W/ 110-120V	1° ~ 1.5°C/hr	140
	28451NP	6	290 gal / 1,098L	50.5 kg			0.5° ~ 1°C/hr	170
EP English (110-120V)	28449EH*	4	210 gal / 795L	120.1 lb	1.1 hp/ 110-120V	1,300W/ 110-120V	2° ~ 3°F/hr	140
	28451EH*	6	290 gal / 1,098L	132.4 lb			1.1° ~ 2°F/hr	170
Standard 12 Languages (220-240V)	28450NP	4	210 gal / 795L	49.8 kg	800W/ 220-240V	2,200W/ 220-240V	1.5° ~ 2.5°C/hr	140
	28452NP	6	290 gal / 1,098L	53.7 kg			1° ~ 2°C/hr	170

US Patent No.8,562,773 | No.9,254,240 | No.9,468,582 | No.9,567,762 | No.9,642,771

• With energy-efficient spa cover



• New, larger Type S2 cartridge with 65% more filtration surface than previous Type S1

• Integrated control box design for easy access and hassle-free cartridge replacement

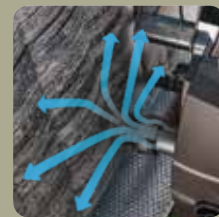


### Intex Link™ App

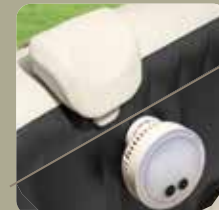
- Control all spa functions from your phone
- Program spa use and maintenance remotely with Wi-Fi connectivity



- Removable wireless control panel
- Integrated wireless charging
- 48 hours of operation on a single charge
- Conveniently attaches to top of the tub



Built-in FastFill™ inflation system



Includes two premium PU foam headrests and one multicolored LED light





## PureSpa™ Glow Deluxe

Welcome to a total spa experience, in which mood and mode are always at your fingertips. The PureSpa™ Glow Deluxe puts all spa functions within reach via the INTEX® Link mobile app. Easily set temperature, adjust LED lighting, and even schedule maintenance so all that remains is the soothing soak delivered by 140 bubble jets. Accommodates up to four people.



**Patented Fiber-Tech™  
Technology**



**Heated Air Bubbles**



# PureSpa™ Glow Deluxe

Experience ultimate relaxation with the PureSpa Glow Deluxe. The control unit allows you to easily adjust the LED lighting to your liking, creating the perfect ambiance for a tranquil soak. With the PureSpa Glow, you can transform your backyard into a luxurious oasis.

Available in 4-person sizes

4-person  
Inner size 57" (1.45m)  
Outer size 77" (1.96m)



GLOW  
ROUND

Available in  
4-person sizes

3-Ply  
Laminated PVC



Spa Height:  
28" / 71cm



Flow Rate:  
460 gal/hr /  
1,741 L/hr

Temp. Range:  
50° ~ 104°F /  
10° ~ 40°C

Hard Water System:  
10W

Salt Water System:  
20W



- New, larger Type S2 cartridge with 65% more filtration surface than previous Type S1
- Integrated control box design for easy access and hassle-free cartridge replacement

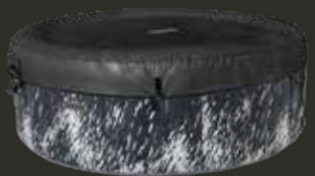


## Intex Link™ App

- Control all spa functions from your phone
- Program spa use and maintenance remotely with Wi-Fi connectivity



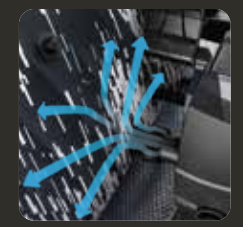
- Removable wireless control panel
- Integrated wireless charging
- 48 hours of operation on a single charge
- Conveniently attaches to top of the tub



Insulated safety cover



Multi-colored LED lights controlled from panel



Built-in FastFill™ inflation system



Includes two premium PU foam headrests



Insulated ground cloth

		Seating Capacity	Water Capacity	Shipping Weight	Bubble Air Blower	Heater	Temp. Rise	Bubble Jets
Standard 12 Languages (110-120V)	28493NP	4	210 gal / 795L	45.6 kg	800W/ 110-120V	1,300W/ 110-120V	1° ~ 1.5°C/hr	140
EH English (110-120V)	28493EH*	4	210 gal / 795L	120.8 lb	1.1 hp/ 110-120V	1,300W/ 110-120V	2° ~ 3°F/hr	140
Standard 12 Languages (220-240V)	28494NP	4	210 gal / 795L	48.7 kg	800W/ 220-240V	2,200W/ 220-240V	1.5° ~ 2.5°C/hr	140
US Patent No.8,562,773   No.9,254,240   No.9,468,582   No.9,567,762   No.9,642,771								• With energy-efficient spa cover





# PureSpa™ Jet & Bubble Deluxe

The PureSpa™ Jet & Bubble Deluxe combines the pleasures of a high-performance jet massager and a bubble massage spa in one luxurious setting. High-performance engineering and HydroAeration™ Technology make the PureSpa™ Jet & Bubble Deluxe the gold standard in luxury spas.



Patented Fiber-Tech™  
Technology



High-Performing  
Massage Jet Nozzle



Improved Water Circulation  
with HydroAeration  
Technology



Powerful & Soothing  
Bubbles





# PureSpa™ Jet & Bubble Deluxe

Customers will love the luxury of up to 140 soothing bubble jets and high-performing massage jets working in harmony for their relaxation. The combination of a state-of-the-art hard water treatment system and the advanced saltwater sanitation system creates an all-inclusive, premium spa experience.



Available in 4- and 6-person sizes

	4-person		6-person
Inner size	51" (1.30m)		63" (1.60m)
Outer size	71" (1.80m)		83" (2.11m)



Spa Height:  
28" / 71cm



ONYX BLACK  
OCTAGON

Available in 4- and 6-person sizes

3-Ply  
Laminated PVC



Flow Rate:  
460 gal/hr /  
1,741 L/hr

Temp. Range:  
50° ~ 104°F /  
10° ~ 40°C

Hard Water System:  
10W

Salt Water System:  
20W

Jet Pressure:  
9-12 psi  
0.62- 0.83 bar

Seating  
Capacity

Water  
Capacity

Shipping  
Weight

Bubble Air  
Blower

Heater

Jet Pump

Jet Nozzle

Temp.  
Rise

Bubble  
Jets

Standard 12 Languages (110-120V)	28457	4	210 gal / 795L	69.4 kg	800W/ 110-120V	1,300W/ 110-120V	1,000W/ 110-120V	4	1° ~ 1.5°C/hr	120
	28461	6	290 gal / 1,098L	75.4 kg				6	0.5° ~ 1°C/hr	140
EP English (110-120V)	28457EP*	4	210 gal / 795L	174.5 lb	1.1 hp/ 110-120V	1,300W/ 110-120V	1.4 hp/ 110-120V	4	2° ~ 3°F/hr	120
	28461EP*	6	290 gal / 1,098L	191.8 lb				6	1.1° ~ 2°F/hr	140
Standard 12 Languages (220-240V)	28458	4	210 gal / 795L	72.0 kg	800W/ 220-240V	2,200W/ 220-240V	1,000W/ 220-240V	4	1.5° ~ 2.5°C/hr	120
	28462	6	290 gal / 1,098L	78.8 kg				6	1° ~ 2°C/hr	140

US Patent No.8,562,773 | No.9,254,240 | No.9,468,582 | No.9,567,762 | No.9,642,771

• With energy-efficient spa cover



## Intex Link™ App

- Control all spa functions from your phone
- Program spa use and maintenance remotely with Wi-Fi connectivity

Download on the  
App Store

GET IT ON  
Google Play



- Removable wireless control panel
- Integrated wireless charging
- 48 hours of operation on a single charge
- Conveniently attaches to top of the tub



The ultimate combination of powerful jets and soothing air bubbles



Includes two  
spa headrests



Includes two  
extra filter  
cartridges



# Accessories



## 1. Premium Spa Headrest (Foam) 28505/E

- The ergonomically shaped Premium Spa Headrest offers maximum comfort for relaxing in the soothing spa
- Soft foam provides comfortable, cushioned surface
- Provides head and neck support
- Easy to reposition or remove for convenience
- Securely attaches to the spa wall
- Dimensions: 11" L x 9" W x 6¾" H (28cm x 23cm x 17cm)
- 6 ea, 7.5 lb (3.4 kg)



## 7. Spa Headrest (Inflatable) 28506/E

- Rest your head in comfort during your luxurious spa experience
- Height adjustable for proper head and neck support
- Securely attaches to the spa wall
- Dimensions: 9½" L x 7½" W x 2½" H (24cm x 19cm x 6cm)
- 12 ea, 5.8 lb (2.6 kg)



## 2. Spa Seat 28502/E

- The Spa Seat enables you to sit comfortably in the tub, raising a person's height with two different height options: 3" (7.5cm) or 5½" (15cm)
- Removable for convenience
- Slip resistant
- Dimensions: 18½" L x 14" W x 8¾" H (47cm x 36cm x 22cm)
- 2 ea, 21.3 lb (9.7 kg)



## 8. Premium Spa Tray 28520/E

- White LED light strip provides ambient lighting during spa time
- Built-in tablet / mobile phone stand allows you to watch movies hands-free
- Easily holds a variety of drinks and snacks
- Powered by 2 coin batteries (model CR2032 – batteries included)
- Securely attaches to the spa wall
- Dimensions: 17¾" L x 10¼" W x 6¼" H (45cm x 26cm x 16cm)
- 4 ea, 9.1 lb (4.2 kg)



## 3. Filter Cartridge S1 (Twin Pack) 29001/E

- 6 ea, 3.2 lb (1.4 kg)



## 4. Filter Cartridge S1 (Six Pack) 29011/E

- 3 ea, 4.7 lb (2.1 kg)



## 5. Filter Cartridge S2 (Twin Pack) 29012/E

- 6 ea, 3.5 lb (1.6 kg)



## 6. Saltwater Conversion Kit NEW 28530/E

- Easily converts your PureSpa to a saltwater system
- The titanium cell is durable and long-lasting, providing years of reliable performance
- Enjoy the benefits of softer, silkier water that's gentle on your skin and eyes
- 20 ea, 7.2 lb (3.3 kg)



## 9. Spa Tray 28500/E

- Keeps beverages and snacks close by while you relax
- Removable for convenience
- Holds 2 standard size beverage containers
- Securely attaches to the spa wall
- Dimensions: 10¼" L x 8⅝" W x 7" H (26cm x 22cm x 18cm)
- 8 ea, 9.9 lb (4.5 kg)



## 10. Multi-Colored Battery Operated LED Light For Bubble Spa 28503/E

- Create the perfect mood and ambiance while you relax
- Illuminates up to 5 different colors: white, green, teal, blue and purple
- Two lighting modes: single color or color changing mode
- 2-hour auto shutoff
- Requires 3 AAA batteries (not included)
- Wattage: 1.0W
- 8 ea, 7.4 lb (3.4 kg)



## 11. Floating Dispenser 29044/E

- Conveniently sized for one chlorine or bromine tablet up to 1½" (3.8cm)
- Suitable for all portable inflatable spas
- Made of durable non-corrosive polypropylene material
- Tablets not included
- 20 ea, 2.7 lb (1.2 kg)



## 15. Spa Bench (2pcs Medium) 28514/E

- Compatible with 4-person round spa models only
- Add as small bench or connect multiple for a surrounding deck
- Lightweight and sturdy: PP material with UV inhibitors
- Supports 350 lb / 160 kg
- Knock-down design for easy assembly /disassembly and storage
- Height: 16½" (42cm)
- 1 ea, 18.5 lb (8.4 kg)



## 12. Spa Maintenance Kit 28004/E

- Curved brush for inner sidewall care
- Durable mesh skimmer net
- Scrubber pad to help eliminate dirt and grime
- 6 ea, 9.4 lb (4.3 kg)



## 14. ZR100 Handheld Rechargeable Pool And Spa Vacuum 28626/E

- Strong built-in 4V 2Ah Ni-Mh rechargeable batteries
- Suitable for use with all PureSpa models, above ground pools, and in-ground pools
- 12 gal/min (45 L/min) water suction for efficient debris collection
- 94" (2.39m) lightweight telescoping aluminum pole
- Two interchangeable brush heads
- Automatic shutoff feature when vacuum is not submerged in water
- IPX8 waterproof switch for added protection
- 5-6 hour charging time/50 minutes maximum running time
- USB charging cable included
- 4 ea, 27.5 lb (12.5 kg)



## 16. Spa Bench Set (2pcs Medium & 2pcs Tall) 28515/E

- Same as #28514, except with 2 tall benches
- Height: 16½" (42cm) & 23½" (60cm)
- 1 ea, 39.6 lb (18.0 kg)



## 13. Energy-Efficient Spa Cover

- Fits 4 / 6 person round shape spa models



## 28534 - 1 ea, 28.6 lb (13.0kg) 28535 - 1 ea, 34.1 lb (15.5 kg)



## 28536 - 1 ea, 29.0 lb (13.2 kg) 28537 - 1 ea, 35.8 lb (16.3 kg)

- This cover enhances spa performance while improving energy efficiency by as much as 50%
- High-density, thermal-resistant foam provides extra insulation and minimizes heat loss
- Spa heats the water 50% more efficiently
- Protects spa from punctures, scratches and weather damage
- Includes belt with locking safety buckle